



POWERED BY  **ZOOMARK**

25 – 26 November 2026

Hall 4, Bombay Exhibition Centre, NESCO
Goregaon East, Mumbai 400063

**Your launchpad
to the future of pet care!**





25 – 26 November 2026

Hall 4, Bombay Exhibition Centre, NESCO
Goregaon East, Mumbai 400063

PetBridge is India's first fully B2B exhibition dedicated to the pet supplies industry and distribution, created to connect professionals within a fast-growing market.

Co-organised by BolognaFiere Group and Inspira Bridge Events Pvt Ltd, the event brings together **Zoomark's** internationally recognised expertise in the pet industry with the strong local know-how of one of India's leading exhibition organisers. The result is a **high-value business platform** that showcases the diversity and innovation of the domestic market while opening the door to international networking and cross-border commercial opportunities.

**Are you ready to
unlock new
opportunities in
India's fast-growing
pet market?**

300+
Exhibitors

7,000+
Trade visitors

25+
Industry speakers

India's pet market is booming!

The Indian market is now worth \$3.6B and expected to double by 2028.

With rising pet ownership, digitalisation and premium demand, India is shaping the future of the pet industry.

This is one of the world's fastest-growing markets, fueled by urbanization, rising incomes and a new culture of prioritizing pet wellness.

Market of pet food and care value is approx. **3.6 billion \$**

Pet food market accounts for **~70%** of industry value

India pet industry is growing at **20%+ CAGR**

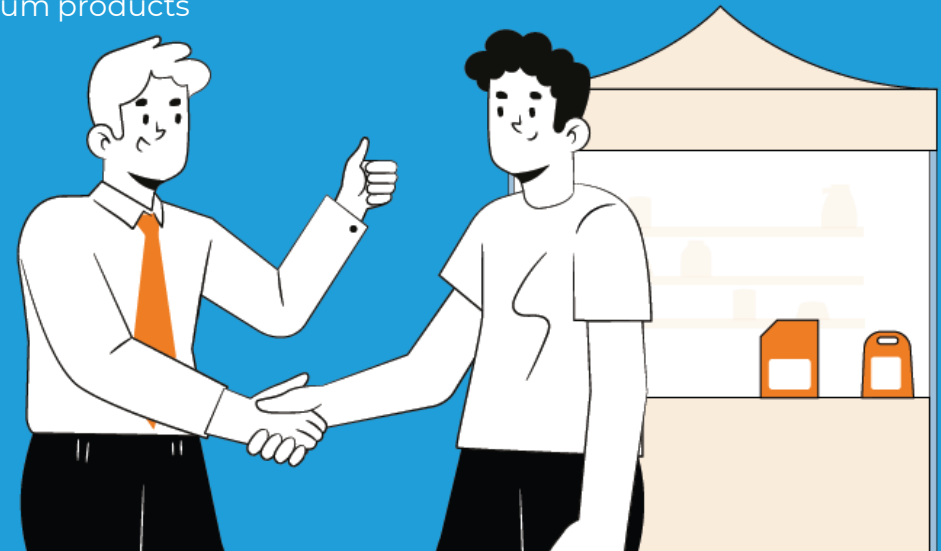
Rapid growth in treats, grooming, accessories, health products

Rapidly maturing supply ecosystem

Rise of **speciality pet retail chains** (Just Dogs, Heads Up for Tails)

Strong demand for **global brands**, premium products

E-commerce contribution rising (Amazon, Flipkart, niche pet portals)





25 – 26 November 2026

Hall 4, Bombay Exhibition Centre, NESCO
Goregaon East, Mumbai 400063

Two days | One marketplace | Endless opportunities

Exhibition

300+ Indian and international exhibitors
7,000+ trade visitors expected

New Products Showcase

The core of the event - special area that highlights innovation and market trends

Match-making activities

Pre-arranged meetings with domestic and international buyers

Conferences and workshops

A rich calendar of educational activities

International Hub

Premium area welcoming the international brands

Start-up Zone

Early-stage companies representing tech and innovation

B2B Meeting Lounge

Lounge welcoming pre-scheduled meetings between exhibitors and buyers

Exclusive services

Tour of petshops and grooming salons in Mumbai, dedicated logistics support, tailored travel packages and more!



25 – 26 November 2026

Hall 4, Bombay Exhibition Centre, NESCO
Goregaon East, Mumbai 400063

The venue

The NESCO Center (Bombay Exhibition Centre) is a modern, highly flexible exhibition and convention hub designed to host large-scale international events. With over 70,000 sqm of fully air-conditioned indoor space and advanced technical infrastructure, it seamlessly accommodates global trade fairs, conferences, and cultural events. Strategically located along Mumbai's Western Express Highway, it offers excellent accessibility and world-class services.



The hall

Hall 4 is a contemporary, pillarless exhibition space conceived for maximum versatility. Featuring state-of-the-art air conditioning and heavy-load flooring, it is perfectly suited for international exhibitions and high-profile events. Its proximity to main entrances and premium dining areas ensures smooth logistics and an enhanced experience for both exhibitors and visitors.





25 – 26 November 2026
Hall 4, Bombay Exhibition Centre, NESCO
Goregaon East, Mumbai 400063

Choose your favourite option

SHELL SCHEME minimum 9 sqm

Turnkey solution that includes (every 9 sqm):

- raw space and electricity consumption
- furniture: walls and company fascia board, carpet, spotlights, 1 reception desk, 2 chairs, power socket
- prints on all walls
- editorial entry in the Official Show Directory
- display of 1 product in the New Products Showcase (regardless the size of the booth)
- exhibitor badges and VIP invitations
- pre-arranged b2b meetings
- petshop tour
- dedicated promotional activities

RAW SPACE minimum 18 sqm

Customisable solution that includes:

- raw space
- editorial entry in the Official Show Directory
- display of 1 product in the New Products Showcase (regardless the size of the booth)
- exhibitor badges and VIP invitations
- pre-arranged b2b meetings
- petshop tour
- dedicated promotional activities

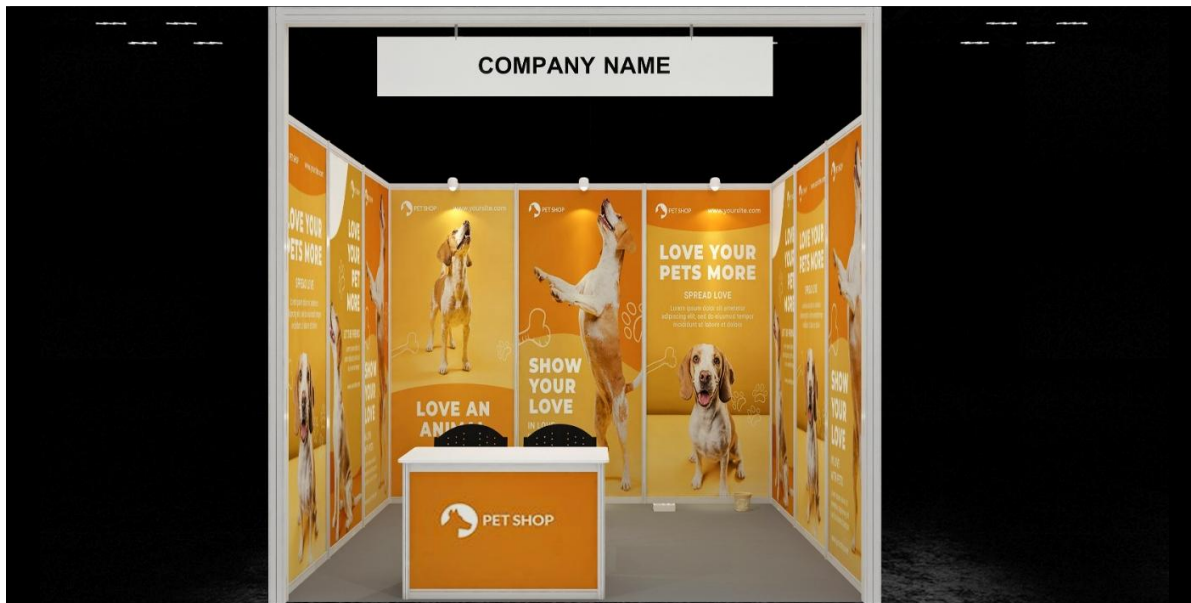
Exclusive services for international exhibitors!

- Dedicated logistics support
- Tailored travel packages
- Special communication campaign

Already exhibiting at Zoomark 2027?
Unlock exclusive savings
with our special event bundle!

Rates

SHELL SCHEME				RAW SPACE		
	Regular rate	Early Bird rate 10% off deadline 31 May	Zoomark 2027 Bundle 15% off no deadline	Regular rate	Early Bird rate 10% off deadline 31 May	Zoomark 2027 Bundle 15% off no deadline
1 open side	€ 205.00/sqm	€ 184.50/sqm	€ 174.25/sqm	€ 180.00/sqm	€ 162.00/sqm	€ 153.00/sqm
2 or more open sides	€ 220.00/sqm	€ 198.00/sqm	€ 187.00/sqm	€ 195.00/sqm	€ 175.50/sqm	€ 165.75/sqm



Payment conditions

Downpayments

- 30% deposit at the time of booking
- 50% by 31 July 2026

Balance

- 20% by 15 October 2026

All fees are subject to 18% Indian GST.

**Be part of India's most ambitious
pet industry initiative**

Contact us now!

International.sales@zoomark.it
www.pet-bridge.com

